



LINDEN  
POSTCARD  
SHOW  
2019-20

LIN  
DEN. NEW  
ART

FRONT COVER IMAGE > *Linden Postcard Show 2019-20* [installation view].  
Photograph > Theresa Harrison Photography.

The *Linden Postcard Show* is one of our gallery's most iconic and much-loved exhibitions.

In 2019, we celebrate the exhibition's 29th birthday in our stunning home in St Kilda.

Each year, we look at new ways to present and interpret this exhibition. This year, we have taken inspiration from the colour spectrum. We hope you enjoy this year's presentation as you discover your own favourite work, amongst the many hanging on the walls.

## INTRODUCTION

The exhibition was first established to provide an opportunity for artists living in the local community to have their work displayed in a public gallery and we are proud to continue and expand upon this tradition. The exhibition now attracts artists from across the country and at every stage of their career – from hobbyist to established and every stage in between. The *Linden Postcard Show* is, at its core, a celebration of creativity and artistic expression. It begins conversations, as people debate which works they want to buy, which they love and which one they would have given the prize to. It is this openness to explore, discover and engage that we enjoy as the conversations waft through the gallery spaces.

We are grateful for the time and consideration of this year's judges who have the difficult task of selecting the winners. Our thanks to:

- > Julie McLaren, Curator, Art Gallery of Ballarat
- > Phillip Adams, Director, Temperance Hall & BalletLab



IMAGE > *Linden Postcard Show 2019-20* [installation view]. Photograph > Theresa Harrison Photography.



Our thanks also to the many generous businesses who support and sponsor this exhibition – without their belief in supporting the creativity of local communities we would be unable to present this exhibition.

Our thanks to:

- > Live Nation through the Palais Theatre Community Fund
- > Elwood Community Bank - A branch of Bendigo Bank
- > Rotary Club Melbourne South
- > Member for Albert Park the Hon. Martin Foley MP
- > Eckersley's Art & Craft
- > Scout Home Goods
- > This Week In St Kilda
- > Drawcard Mr Moto.

As a home for new art we are open to bold ideas, to different ways of experiencing and seeing the world and oneself. We believe this role is an important part of contemporary art and we aim to foster a curious audience that is open to engaging with art, ideas and approaches to the world.

We encourage each of you to explore, debate and of course purchase an artwork for yourself or as a gift – as this fosters the self-belief in the creative processes of the artists whose work is on display and allows Linden to remain free to enter.

Melinda Martin  
 Director  
 Linden New Art  
 November 2019

IMAGE > *Linden Postcard Show 2019-20* [installation view]. Photograph > Theresa Harrison Photography.



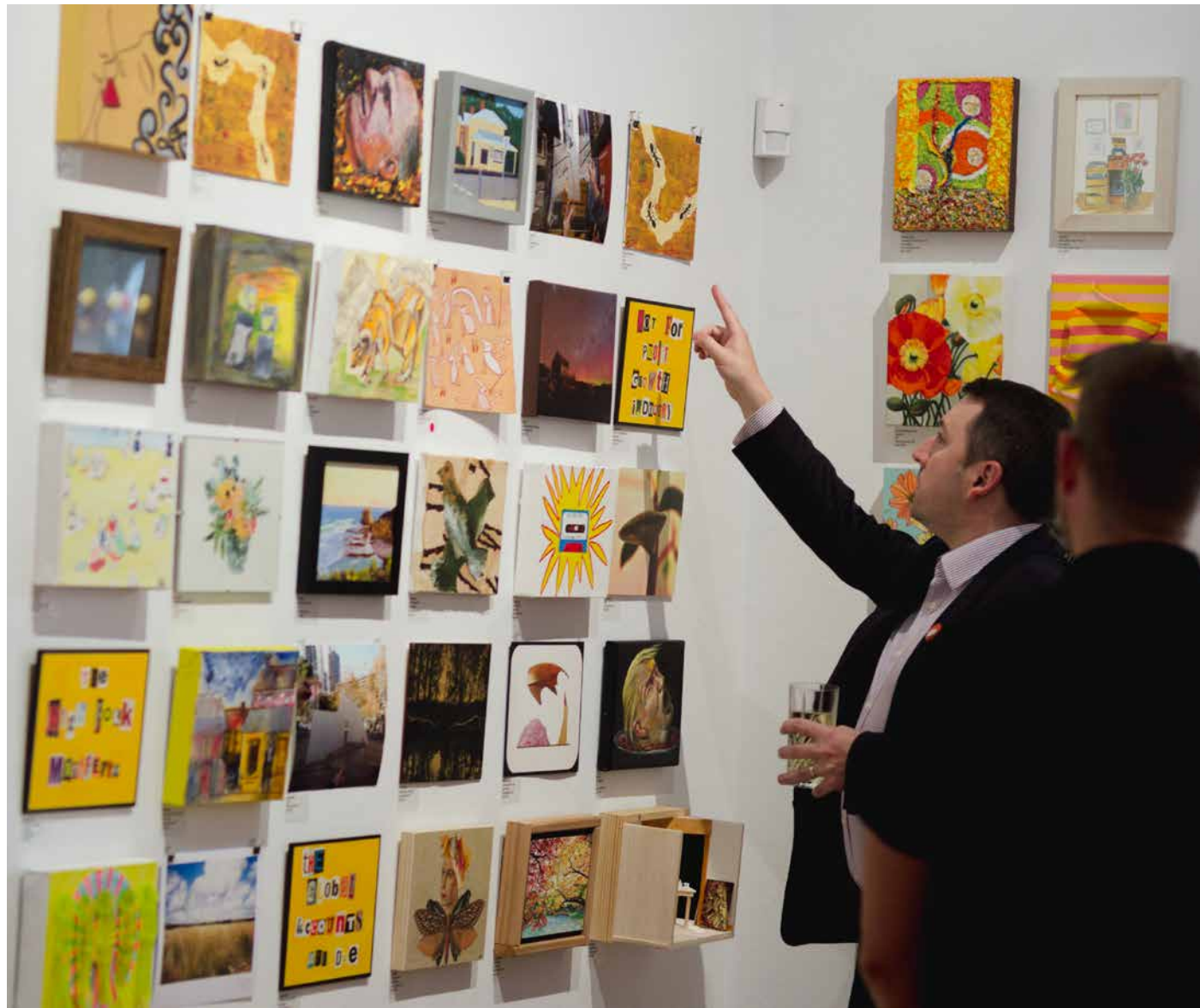


IMAGE > Guests at the *Linden Postcard Show 2019-20* VIP preview.  
Photograph > Theresa Harrison Photography.



IMAGE > Guests at the *Linden Postcard Show 2019-20* VIP preview.  
Photograph > Theresa Harrison Photography.

This year's judges were:

Julie McLaren > Curator, Art Gallery of Ballarat  
Phillip Adams > Director, Temperance Hall & BalletLab

JUDGES



IMAGE > *The Linden Postcard Show 2019-20* judges [L-R] Julie McLaren, Curator, Art Gallery of Ballarat & Phillip Adams, Director, Temperance Hall & BalletLab. Photograph > Mathieu Vendeville.

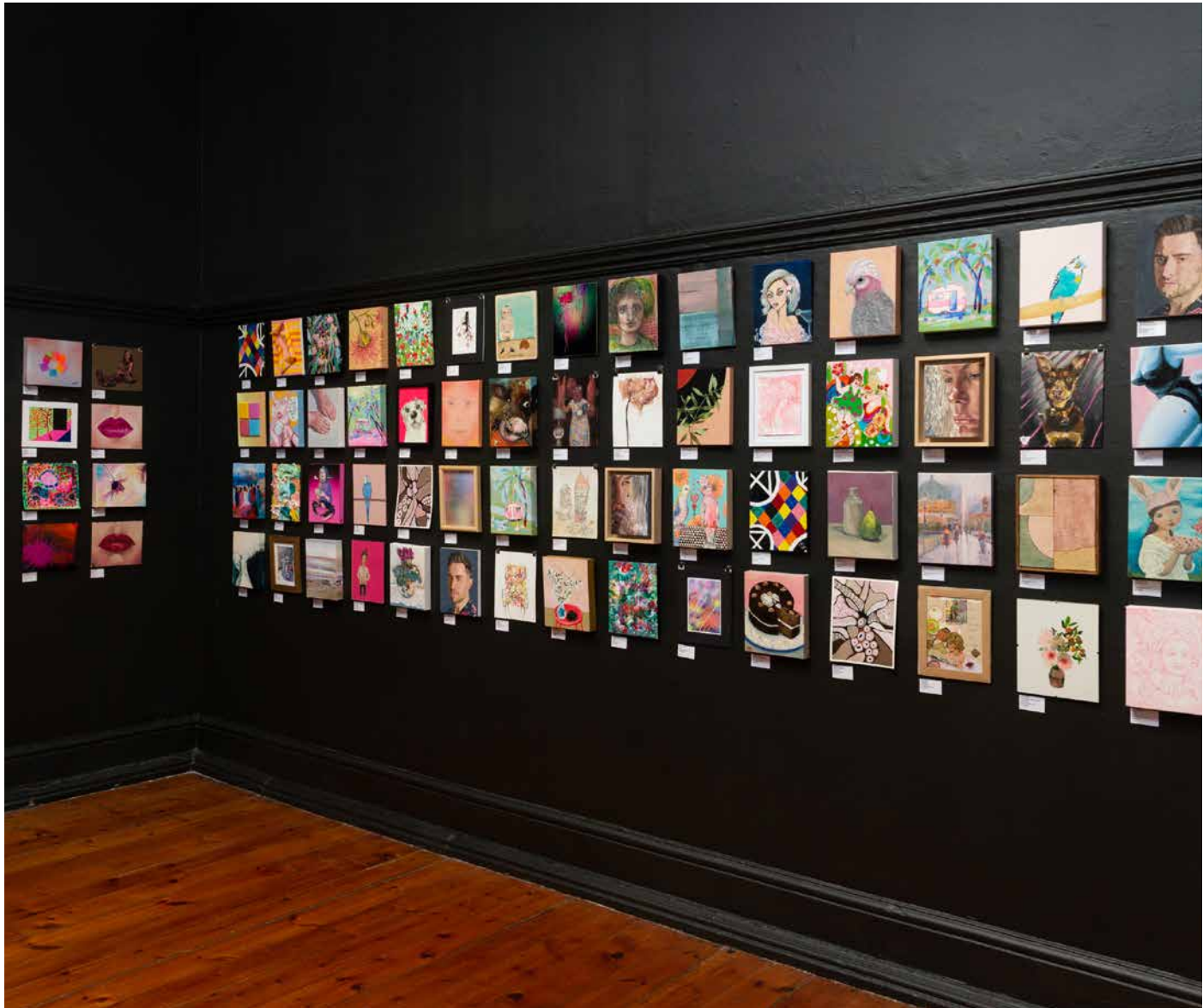
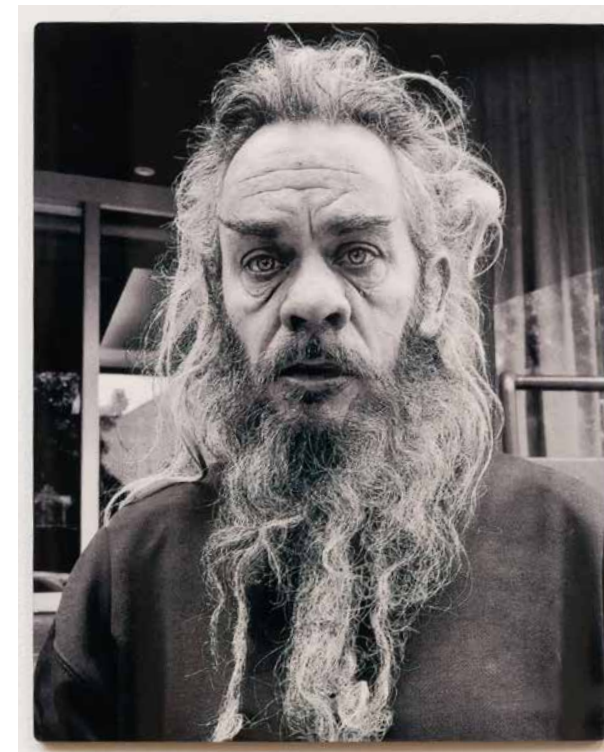


IMAGE > *Linden Postcard Show 2019-20* [installation view]. Photograph > Theresa Harrison Photography.



## PRIZE WINNERS



### PALAIS THEATRE > FIRST PRIZE

Supported by Palais Theatre Community Fund

> \$2,500 cash prize

MARK HOPPER, *Shaun The Wanderer*, 2019, photograph.

Image courtesy of the artist. Photograph > Theresa Harrison Photography.

### JUDGES COMMENTS

*Both the judges were drawn to the haunting and arresting subject of this photograph. The person captured here made them feel both alarmed and concerned but Shaun seemed to be looking right past them. 21.11.19*



#### ELWOOD COMMUNITY BANK > ARTIST ENCOURAGEMENT AWARD

Supported by Elwood Community Bank - a branch of Bendigo Bank  
> \$1,500 cash prize

CHARMAINE & JAKSON KVALIC, *The Likely Lad of Lilydale*, 2019, silk.  
Image courtesy of the artist. Photograph > Theresa Harrison Photography.

#### JUDGES COMMENTS

*Both the judges fell in love with this work, they loved the image, the technique and the colours. 21.11.19*



#### ROTARY CLUB MELBOURNE SOUTH > BEST PORTRAIT AWARD

Supported by Rotary Club Melbourne South  
> \$1,000 cash prize

ROBERT FENTON, *We Can Fix This, I Think!*, 2019, oil.  
Image courtesy of the artist. Photograph > Theresa Harrison Photography.

#### JUDGES COMMENTS

*The judges were moved by the way this work captures our complex relationship with Indigenous history and that the face is erased in this delicate oil painting. 21.11.19*



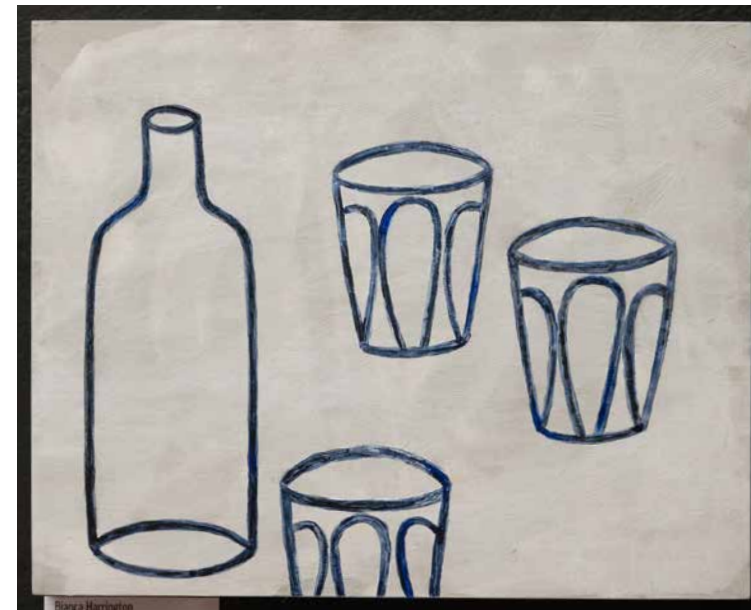


#### MEMBER FOR ALBERT PARK > LOCAL ARTIST AWARD

Supported by the Member for Albert Park, Hon. Martin Foley MP  
> \$600 cash prize & image used on a greeting card for use by the Member of Parliament

SAMANTHA MOSES, *Turning 50*, 2019, digital print.

Image courtesy of the artist. Photograph > Theresa Harrison Photography.



#### SCOUT HOME GOODS > BEST STILL LIFE AWARD

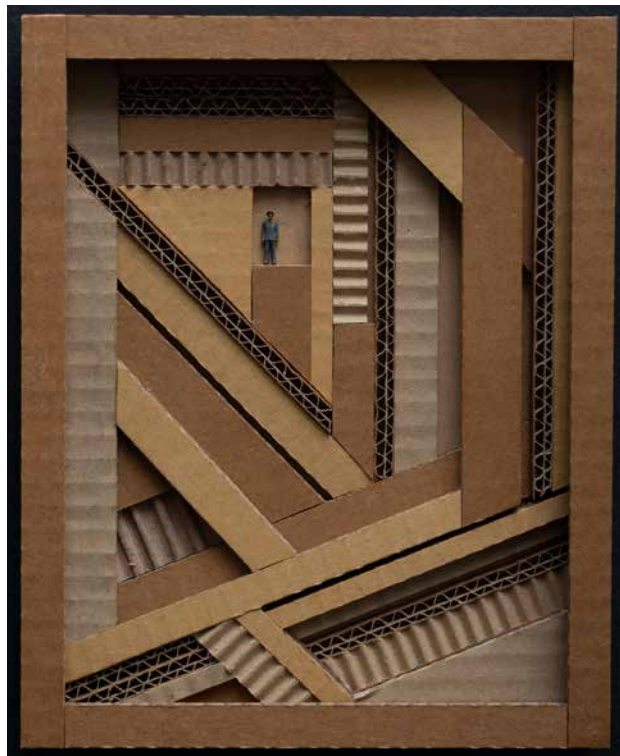
Supported by Scout Home Goods  
> \$500 voucher to spend in store

BIANCA HARRINGTON, *Three Waters*, 2019, acrylic.

Image courtesy of the artist. Photograph > Theresa Harrison Photography.

#### JUDGES COMMENTS

*The judges loved the way this image was reduced down to a simple line and they felt you could reach out and hold the glass. They felt this image was very Melbourne. 21.11.19*



#### ECKERSELY'S ART & CRAFT > BEST LANDSCAPE AWARD

Supported by Eckersely's Art & Craft  
> \$500 voucher to spend in store

GREG QUINTON, *Figure In Landscape 4*, 2019, mixed media.  
Image courtesy of the artist. Photograph > Theresa Harrison Photography.

#### JUDGES COMMENTS

*The judges loved the way the texture of the cardboard formed the landscape and the scale of the figure located within it. 21.11.19*



#### THIS WEEK IN ST KILDA > BEST PHOTOGRAPH AWARD

Supported by This Week In St Kilda  
> \$400 cash prize

DAVID APOSTOL, *2884/23*, 2019, photograph.  
Image courtesy of the artist. Photograph > Theresa Harrison Photography.

#### JUDGES COMMENTS

*The judges loved the film still quality of this work, it was moment frozen in time that captured choreographed movements. An ephemeral work that captured a moment. 21.11.19*

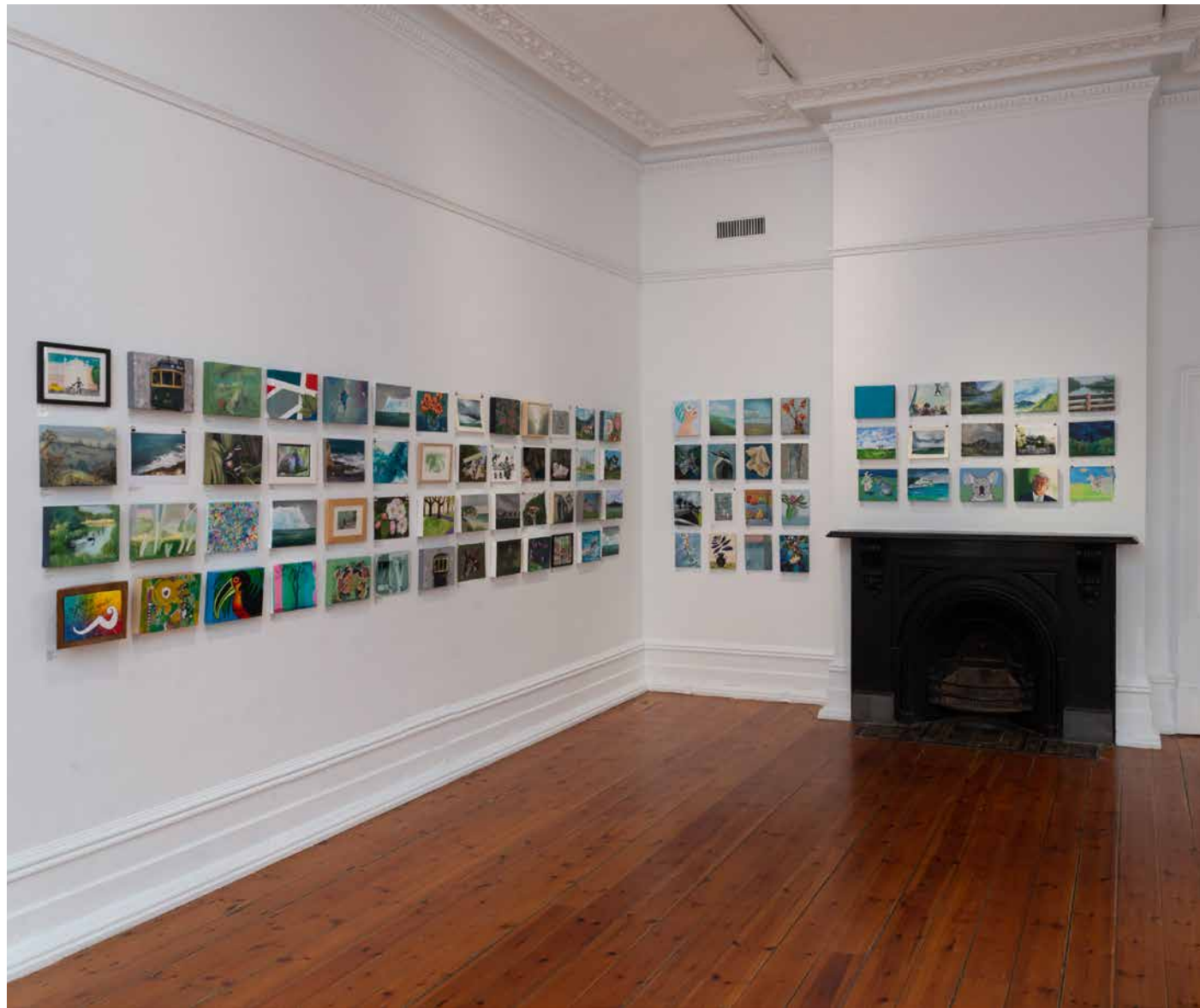


IMAGE > *Linden Postcard Show 2019-20* [installation view]. Photograph > Theresa Harrison Photography.

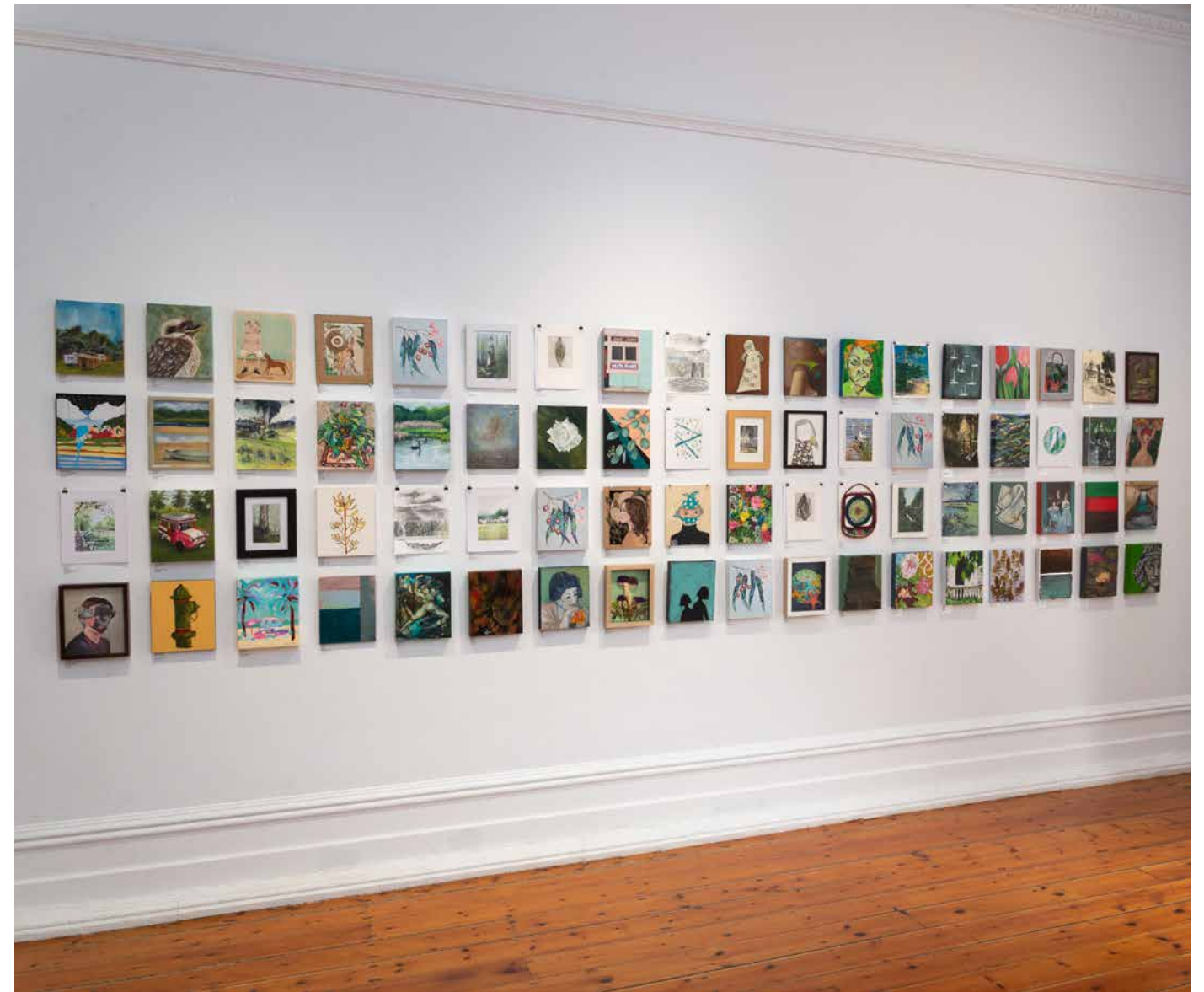


IMAGE > *Linden Postcard Show 2019-20* [installation view]. Photograph > Theresa Harrison Photography.



**TREASURE HUNT >  
AROUND THE WORLD  
23.11.2019 > 9.02.2020 > FREE, DROPI-IN**

Grab a pencil and get ready to explore the *Linden Postcard Show*. Follow the treasure map and mark X when you've found the artworks.  
Free to play throughout the duration of the Linden Postcard Show.

## EVENTS

**SPECIAL EVENT >  
LINDEN COMMUNITY DAY  
SUNDAY 24.11.2019 > 11AM-4PM > FREE**

Join the festivities on Community Day to celebrate the return of the *Linden Postcard Show* and the beautiful spring weather. The festival day will celebrate the opening weekend of the 29th *Linden Postcard Show* showcasing over 1,200 mini masterpieces hanging on the gallery walls. With kids' activities, treasure hunts, curator-led exhibition tours and more – there is something for everyone on this special Sunday.

**CRAFTERNOON FOR ADULTS >  
FESTIVE FLORISTRY \*  
SATURDAY 30.11.2019 > 12PM-3PM > \$85**

For the holiday season this year, learn about festive botanical styling and create floral wall hangings to decorate your home. In this workshop, you will learn floristry design principles focusing on sustainability, design elements, colour, shape and texture with the makers from Put Your Heart Into It.

**ARTIST SPEAKEASY >  
GRANT APPLICATION WRITING  
THURSDAY 5.12.2019 > 6PM-7.30PM > \$11**

Applying for grants can be a highly competitive process. Join Linden New Art's Director Melinda Martin for a comprehensive how-to and introduction to the strategies for effective grant application writing.

**ON HOLIDAYS AT LINDEN >  
NGV KIDS ON TOUR 2020  
11.01.2020 > 19.01.2020 > FREE DROP-IN**

This summer school holidays, join in free drop-in activities as part of NGV Kids on Tour at Linden New Art. Inspired by *KAWS: PLAYTIME* exhibition on now at the NGV, kids are invited to get creative clay modelling, drawing and collage activities.

Presented in partnership with the National Gallery of Victoria.

**MEET THE ARTISTS > LINDEN POSTCARD SHOW  
PRIZE WINNERS  
SUNDAY 19.01.2020 > 2PM-3PM > FREE**

Hear from the winning artists of the *Linden Postcard Show 2019-20* in conversation with Linden Curator Juliette Hanson. Learn about their practice, artistic process and their connection with the iconic *Linden Postcard Show*.

**CRAFTERNOON FOR KIDS >  
LED BY ARTIST FARNAZ DADFAR  
SUNDAY 02.02.2020 > 1PM-2:30PM > \$15**

Join *Linden Art Prize 2019* artist Farnaz Dadfar for a special artist-led kids' workshop. Inspired by the artist's use of colour, pattern and design. Kids are invited to explore their creativity and think outside the box to make their own experimental art pieces.

**CRAFTERNOON FOR ADULTS >  
ECO INSTRUMENTS  
SUNDAY 09.02.2020 > 12.30PM-3.30PM > \$55**

Join Neil Blake (also known as the Baykeeper) from the Port Phillip EcoCentre in a special workshop to make and decorate instruments using natural and sustainable materials. With bamboo and local reeds, participants will learn how Blake makes his own musical instruments followed by the creation and performance of a song together.

Presented as part of the Sustainable Living Festival 2020 in partnership with the Port Phillip EcoCentre.

**BOOK ONLINE AT [LINDENARTS.ORG](https://www.lindenarts.org)**

\* Please note > We apologise for any inconvenience, the Linden Workshop is not wheelchair accessible.

## FOLLOW US

JOIN IN THE CONVERSATION & STAY UP-TO-DATE!

Follow us on social media:

 /LindenNewArt

 @linden\_new\_art

 @LindenNewArt

Subscribe to our e-newsletter at [lindenarts.org](http://lindenarts.org)

# LINDEN NEW ART

DIRECTOR: MELINDA MARTIN

CURATOR: JULIETTE HANSON

DEVELOPMENT MANAGER: LYN JOHNSON

EVENTS COORDINATOR: JASMIN MCNEILL

DESIGN & MARKETING COORDINATOR: MATHIEU VENDEVILLE

GALLERY ADMINISTRATOR: HANA VASAK & SEBASTIAN HAEUSLER

VOLUNTEER OFFICER: CHLOÉ HAZELWOOD

FREE ENTRY  
OPENING HOURS  
Tuesday to Sunday  
11AM to 4PM  
Closed Mondays  
& public holidays

26 ACLAND STREET,  
ST KILDA VIC 3182  
[www.lindenarts.org](http://www.lindenarts.org)  
[gallery@lindenarts.org](mailto:gallery@lindenarts.org)  
Phone: 03 9534 0099

Trams: 12, 16, 96  
(3A weekends only)  
Buses: 600, 606,  
623, 246

 /LindenNewArt  
 @linden\_new\_art  
 @LindenNewArt

LINDEN NEW ART  
IS FUNDED BY



GOVERNMENT SUPPORTER



PROJECT PARTNER



CORPORATE PARTNERS



LINDEN POSTCARD SHOW IS PROUDLY SUPPORTED BY THE FOLLOWING PARTNERS

